

[www.Raycofixture.com](http://www.Raycofixture.com)



## 1/4-20 Component Prices

### Table of Contents:

Page 1- Clamps

Page 2- Magnets / Adjustables

Page 3- Adaptors / Cones / Spring Pins

Page 4- Vacuum Accessories / Suction Cups

Page 5- Stand-Offs

Page 6- Towers / Miscellaneous

Page 7- Chuck / Brackets / Vises

Page 8- Vision Accessories

Call for Details about our Custom Fixturing!

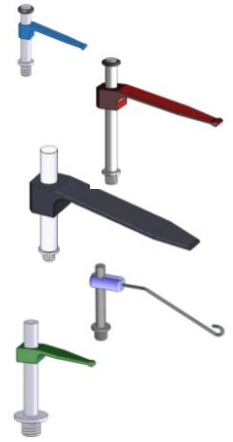


All Components are  
Identified for  
Repeatable Set-ups



January 2011

Tension Spring		
Rayco Part #	Description	Price
R20-ST5-1	Small Tension Spring -Short Post	\$ 22.90
R20-ST5-3	Small Tension Spring	\$ 23.90
R20-LT5-3	Large Tension Spring	\$ 25.90
R20-LT5-PO	Large Tension Spring Post Only!	\$ 19.00
R20-LT5-AO	Large Tension Spring Arm Only!	\$ 19.00
R20-ST5-AO-RT	Small Tension Spring Arm Only! - Rubber Tipped	\$ 24.00
R20-LT5-AO-RT	Large Tension Spring Arm Only! - Rubber Tipped	\$ 24.00
R20-XLT5	X-large tension spring	\$ 44.90
R20-XLT5P	X-large tension spring w/ plunger	\$ 56.90
R20-WT5-125-1	Wire Tension Spring Short Post. Short Spring	\$ 26.40
R20-WT5-2-2	Wire Tension Spring Long Post. Long Spring	\$ 30.90
R20-MT5-1	Mini Tension Spring (1" Post)	\$ 21.40
R20-MT5-150	Mini Tension Spring (1.5" Post)	\$ 29.80



Toggle Clamp		
Rayco Part #	Description	Price
R20-SDC	Small DeStaCo Clamp	\$ 71.90
R20-LDC	Large DeStaCo Clamp	\$ 66.90



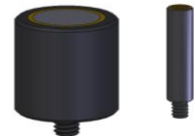
Tension Spring Bracket		
Rayco Part #	Description	Price
R20-75-T5B	3/4" Dia. Tension Spring Bracket	\$ 40.59
R20-1-T5B	1" Dia. Tension Spring Bracket	\$ 41.70



Spring Holding Device		
Rayco Part #	Description	Price
R20-SHD	Spring Holding Device	\$ 79.20
R20-PC	Pusher Clamp (3 End Devices) 1/4-20	\$ 76.90



Magnet		
Rayco Part #	Description	Price
R20-50-M	1/2" Dia. Magnet	\$ 28.40
R20-75-M	3/4" Dia. Magnet	\$ 31.70
R20-1-M	1" Dia. Magnet	\$ 41.20
R20-125-M	1 1/4" Dia. Magnet	\$ 49.90



Pin Magnet		
Rayco Part #	Description	Price
R20-50-PM	1/2" Dia. Pin Magnet	\$ 57.20
R20-75-PM	3/4" Dia. Pin Magnet	\$ 68.40
R20-1-PM	1" Dia. Pin Magnet	\$ 72.70



V Magnet		
Rayco Part #	Description	Price
R20-50-VM	1/2" Dia. V-Magnet	\$ 63.40
R20-75-VM	3/4" Dia. V-Magnet	\$ 76.40
R20-1-VM	1" Dia. V-Magnet	\$ 81.90
R20-125-VM	1 1/4" Dia. V-Magnet	\$ 99.70



V Magnet with Base		
Rayco Part #	Description	Price
R20-50-VMB	1/2" Dia. V-Magnet on Base	\$ 106.40
R20-75-VMB	3/4" Dia. V-Magnet on Base	\$ 109.90
R20-1-VMB	1" Dia. V-Magnet on Base	\$ 114.40
R20-125-VMB	1 1/4" V-Magnet on Base	\$ 131.40



Pivot Joint		
Rayco Part #	Description	Price
R20-PJ	Pivot Joint (1/4-20 Thread)	\$ 71.90



Adjustable Pivot Joint		
Rayco Part #	Description	Price
R20-APJ	Adjustable pivot Joint (1/4-20 Thread)	\$ 72.00



Adjustable Jack Stand		
Rayco Part #	Description	Price
R20-50-JS	1/2" Dia. Small Jackstand	\$ 40.20
R20-1-JS	1" Dia. Large Jackstand	\$ 53.20



Adjustable Height Stand		
Rayco Part #	Description	Price
R20-AHS	Adjustable Height Stand	\$ 48.40



Adjustable Height V-Stand		
Rayco Part #	Description	Price
R20-50-AHVS	1/2" Dia. Small Adjustable Height V	\$ 34.90
R20-1-AHVS	1" Dia. Large Adjustable Height V	\$ 34.90



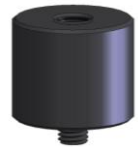
Slide Base		
Rayco Part #	Description	Price
R20-SLD	1/4-20 Slide Base	\$ 26.40
R20-MSLD	1/4-20 Mini Slide Base - 1" Length	\$ 24.90



Locating Blocks		
Rayco Part #	Description	Price
R20-LB	locating block w/ base	\$ 63.90
R20-LB-BASE	Locating Block Base	\$ 25.90



Standoff Adapter		
Rayco Part #	Description	Price
R20-6-SOA	1" Dia. X 1" Standoff Adapter w/ 6mm Threads	\$ 25.00
R20-8-SOA	1" Dia. X 1" Standoff Adapter w/ 8mm Threads	\$ 14.90
R20-10-SOA	1" Dia. X 1" Standoff Adapter w/ 10mm Threads	\$ 25.00
R20-12-SOA	1" Dia. X 1" Standoff Adapter w/ 12mm Threads	\$ 25.00
R20-516-SOA	1" Dia. X 1" Standoff Adapter w/ 5/16 Threads	\$ 25.00
R20-38-SOA	1" Dia. X 1" Standoff Adapter w/ 3/8-16 Threads	\$ 25.00



Tooling Ball		
Rayco Part #	Description	Price
R20-50-TB	1" Dia. X 1" Standoff w/ 1/2" Dia. Tooling Ball	\$ 57.99



Adjustable T-Arm		
Rayco Part #	Description	Price
R20-AA	Adjustable T-Arm	\$ 61.90



Cones		
Rayco Part #	Description	Price
R20-NC	Nylon Cone	\$ 6.70
R20-SC	Steel Cone	\$ 12.40
R20-AC	Aluminum Cone	\$ 22.40
R20-SRP	Steel Resting Pin	\$ 12.20



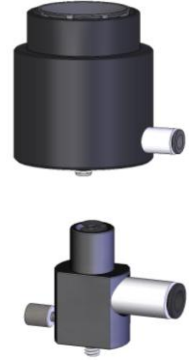
Spring - Loaded, Rounded Pin Standoff		
Rayco Part #	Description	Price
R20-502-SLRP	1/2" Dia. X 2" Spring Loaded Rounded Pin Standoff	\$ 64.43
R20-752-SLRP	3/4" Dia. X 2" Spring Loaded Rounded Pin Standoff	\$ 70.88



Spring - Loaded, Tapered Pin Standoff		
Rayco Part #	Description	Price
R20-502-SLTP	1/2" Dia. X 2" Spring Loaded Pin Standoff w/ 1/4" Taper	\$ 64.43
R20-752-SLTP	3/4" Dia. X 2" Spring Loaded Pin Standoff w/ 3/8" Taper	\$ 70.88



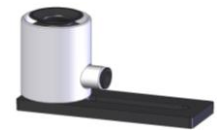
Suction Cup		
Rayco Part #	Description	Price
R20-10-SC	10mm Suction Cup	\$ 55.78
R20-15-SC	15mm Suction Cup	\$ 57.27
R20-20-SC	20mm Suction Cup	\$ 62.02
R20-25-SC	25mm Suction Cup	\$ 82.50
R20-30-SC	30mm Suction Cup	\$ 58.04
R20-40-SC	40mm Suction Cup	\$ 67.76
R20-50-SC	50mm Suction Cup	\$ 73.78
R20-5-MSC	5mm Suction Cup, 360° Rotating base, 3/4 Dia. X .75 H.	\$ 53.80
R20-10-MSC	10mm Suction Cup, 360° Rotating base, 3/4 Dia. X .75 H.	\$ 55.10



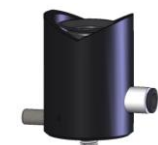
Exposed Suction Cup		
Rayco Part #	Description	Price
R20-10-EXSC	10mm Exposed Suction Cup	\$ 37.51
R20-20-EXSC	20mm Exposed Suction Cup	\$ 43.05
R20-30-EXSC	30mm Exposed Suction Cup	\$ 51.59
R20-50-EXSC	50mm Exposed Suction Cup	\$ 65.59



Slide Suction Cup		
Rayco Part #	Description	Price
R20-10-SSC	10mm Slide Suction Cup	\$ 64.60
R20-15-SSC	15mm Slide Suction Cup	\$ 67.30
R20-20-SSC	20mm Slide Suction Cup	\$ 70.59



V Suction Cup		
Rayco Part #	Description	Price
R20-10-VSC	10mm V-Suction Cup	\$ 70.90
R20-15-VSC	15mm V-Suction Cup	\$ 83.72
R20-20-VSC	20mm V-Suction Cup	\$ 89.30
R20-40-VSC	40mm V-Suction Cup	\$ 110.47
R20-5-VSC	5mm Suction Cup, V 360° Rotating base, 19mm Dia.X35	\$ 69.50
R20-10-MVSC	10mm Suction Cup, V 360° Rotating base, 19mm Dia.X35	\$ 70.90



Square V Suction Cup		
Rayco Part #	Description	Price
R20-20-SVSC	20mm Square V-Suction Cup	\$ 117.72
R20-40-SVSC	40mm Square V-Suction Cup	\$ 136.40
R20-50-SVSC	50mm Square V-Suction Cup	\$ 190.90



Vacuum accessories		
Rayco Part #	Description	Price
R20-X10L VP	X10L VACUUM PUMP, 1/8" Male quick disconnect	\$ 190.72
R-9P-M (9 prt manifold)	9 Port Manifold, 1 Inlet	\$ 160.00
R-13P-M (13 port manifold)	13 Port Manifold, 1 inlet	\$ 207.93
R-12-VH	Vacuum hose, 12" Length	\$ 2.00
R-18-VH	Vacuum hose, 18" Length	\$ 3.00
R-24-VH	Vacuum hose, 24" Length	\$ 4.00
R-36-VH	Vacuum hose, 36" Length	\$ 6.00
R-60-VH	Vacuum hose, 60" Length	\$ 10.00
R-120-VH	Vacuum hose, 120" Length	\$ 20.00
R-PMC1002	Open coupler	\$ 8.91
R-PMCD1002	Closed coupler	\$ 12.22
R-PMCD2202	Straight hose barb	\$ 10.00
R-PMC2302	Elbow hose barb	\$ 7.73



Standoff		
Rayco Part #	Description	Price
R20-2525-SO*	1/4" Dia. X 1/4" H. Standoff (No Tapped Hole)	\$ 9.70
R20-2550-SO*	1/4" Dia. X 1/2" H. Standoff (No Tapped Hole)	\$ 12.40
R20-251-SO*	1/4" Dia. X 1" H. Standoff (No Tapped Hole)	\$ 13.40
R20-37525-SO*	3/8" Dia. X 1/4" H. Standoff (No Tapped Hole)	\$ 11.70
R20-37550-SO	3/8" Dia. X 1/2" H. Standoff	\$ 10.20
R20-37575-SO	3/8" Dia. X 3/4" H. Standoff	\$ 11.70
R20-3751-SO	3/8" Dia. X 1" H. Standoff	\$ 12.20
R20-5025-SO*	1/2" Dia. X 1/4" H. Standoff (No Tapped Hole)	\$ 12.10
R20-5050-SO	1/2" Dia. X 1/2" H. Standoff	\$ 10.90
R20-5075-SO	1/2" Dia. X 3/4" H. Standoff	\$ 10.20
R20-501-SO	1/2" Dia. X 1" H. Standoff	\$ 10.40
R20-502-SO	1/2" Dia. X 2" H. Standoff	\$ 11.70
R20-503-SO	1/2" Dia. X 3" H. Standoff	\$ 14.00
R20-504-SO	1/2" Dia. X 4" H. Standoff	\$ 15.00
R20-7550-SO	3/4" Dia. X 1/2" H. Standoff	\$ 11.20
R20-7575-SO	3/4" Dia. X 3/4" H. Standoff	\$ 11.20
R20-751-SO	3/4" Dia. X 1" H. Standoff	\$ 11.40
R20-752-SO	3/4" Dia. X 2" H. Standoff	\$ 11.90
R20-753-SO	3/4" Dia. X 3" H. Standoff	\$ 12.70
R20-754-SO	3/4" Dia. X 4" H. Standoff	\$ 13.40
R20-755-SO	3/4" Dia. X 5" H. Standoff	\$ 18.00
R20-756-SO	3/4" Dia. X 6" H. Standoff	\$ 19.20
R20-150-SO	1" Dia. X 1/2" H. Standoff	\$ 13.90
R20-175-SO	1" Dia. X 3/4" H. Standoff	\$ 11.40
R20-11-SO	1" Dia. X 1" H. Standoff	\$ 11.90
R20-12-SO	1" Dia. X 2" H. Standoff	\$ 12.90
R20-13-SO	1" Dia. X 3" H. Standoff	\$ 14.90



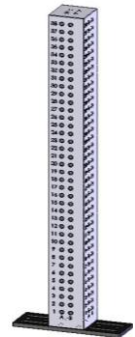
Pin Standoff		
Rayco Part #	Description	Price
R20-2525-PSO	1/4" Dia. X 1/4" H. X .06" Pin Standoff	\$ 10.60
R20-2550-PSO	1/4" Dia. X 1/2" H. X .06" Pin Standoff	\$ 12.70
R20-251-PSO	1/4" Dia. X 1" H. X .06" Pin Standoff	\$ 13.20
R20-37525-PSO	3/8" Dia. X 1/4" H. X .06" Pin Standoff	\$ 10.60
R20-37550-PSO	3/8" Dia. X 1/2" H. X .06" Pin Standoff	\$ 12.70
R20-3751-PSO	3/8" Dia. X 1" H. X .06" Pin Standoff	\$ 13.20
R20-5025-PSO	1/2" Dia. X 1/4" H. X 1/8" PinStandoff	\$ 10.90
R20-5075-PSO	1/2" Dia. X 3/4" H. X 1/8" Pin Standoff	\$ 14.90
R20-501-PSO	1/2" Dia. X 1" H. X 1/8" Pin Standoff	\$ 15.20
R20-7575-PSO	3/4" Dia. X 3/4" H. X 1/8" Pin Standoff	\$ 16.70
R20-175-PSO	1" Dia. X 3/4" H. X 1/8" Pin Standoff	\$ 22.10



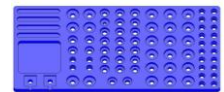
Rounded Pin Standoff		
Rayco Part #	Description	Price
R20-5075-RPSO	1/2" Dia. X 3/4" H. X 1/4" Rounded Pin Standoff	\$ 35.68
R20-501-RPSO	1/2" Dia. X 1" X 1/4" Rounded Pin Standoff	\$ 37.11



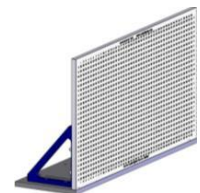
Mini Towers		
Rayco Part #	Description	Price
R20-14-MT4	1" Sq. X 4" Mini Tower (1 Row, 4 Sides) w/ 1/4-20 Thread	\$ 120.40
R20-16-MT4	1" Sq. X 6" Mini Tower (1 Row, 4 Sides) w/ 1/4-20 ...	\$ 130.40
R20-18-MT4	1" Sq. X 8" Mini Tower (1 Row, 4 Sides) w/ 1/4-20 ...	\$ 140.40
R20-112-MT4	1" Sq. X 12" Mini Tower (1 Row, 4 Sides) w/ 1/4-20...	\$ 167.40
R20-1512-MT4	1 1/2" Sq. X 12" Mini Tower (2 Rows, 4 Sides) w/ 1/4-20.	\$ 278.90
R20-1516-MT4	1 1/2" Sq. X 16" Mini Tower (2 Rows, 4 Sides) w/ 1/4-20.	\$ 328.90
R20-220-MT4	2" Sq. X 20" Mini Tower (2 Rows, 4 Sides) w/ 1/4-20...	\$ 496.00
R20-224-MT4	2" Sq. X 24" Mini Tower (2 Rows, 4 Sides) w/ 1/4-20...	\$ 510.90
R20-230-MT4	2" Sq. X 30" Mini Tower (2 Rows, 4 Sides) w/ 1/4-20...	\$ 594.90



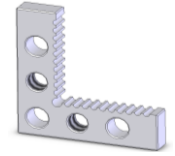
Component Trays		
Rayco Part #	Description	Price
R20-SCT	1/4"-20 Small Component Tray	\$ 139.90
R-VCT	Vacuum Component Tray	\$ 152.73
R20-LCT	Large Component Tray	\$ 324.90



Vertical Plate		
Rayco Part #	Description	Price
R20-125-VP	12" X 5" X 1/2" Vertical Plate w/ 1/4-20 Threaded Holes	\$ 431.36
R20-147-VP	14" X 7" X 1/2" Vertical Plate w/ 1/4-20 Threaded Holes	\$ 716.18
R20-2010-VP	20" X 10" X 1/2" Vertical Plate w/ 1/4-20 Threaded Holes	\$ 1,461.91



Others		
Rayco Part #	Description	Price
R20-MCV	1/4-20 mini corner viewer	\$ 47.70
R20-CV	1/4-20 corner viewer (large)	\$ 56.20
R-ATS-14	adapter thumb screw	\$ 5.90
R-ATS-20	adapter thumb screw	\$ 7.70
R20-AS	1/4-20 adapter screw	\$ 7.20
R20-DK-45	Thumb Screw	\$ 7.70



Rotating Standoff		
Rayco Part #	Description	Price
R20-11-RS	1/4-20 Rotating Standoff	\$ 64.00



Adjustable Angle Plate		
Rayco Part #	Description	Price
R20-AAP	1/4-20 Adjustable Angle Plate	\$ 153.00



Spring Loaded Pusher Clamp		
Rayco Part #	Description	Price
R20-SLPC	1/4-20 Spring loaded push clamp	\$ 56.00
R8-SLPC	8mm Spring loaded push clamp	\$ 56.00



3 Jaw Hand Chuck		
Rayco Part #	Description	Price
R20-CJ3	1/4-20 3 Jaw chuck	\$ 365.00



90° Angle Brackets		
Rayco Part #	Description	Price
R20-90L2	90° Angle bracket including: 1-slot, 2-rows 1/4-20 tapped	\$ 37.50
R20-90L3	90° Angle bracket including: 3-rows 1/4-20 tapped holes	\$ 37.50



Steel Vise		
Rayco Part #	Description	Price
R20-MV-2125	Steel Mini Vise 2-1/8 jaw opening, 2-3/8Wx6-3/4L	\$ 168.00



Mini Vise		
Rayco Part #	Description	Price
R20-MV-A	Mini Vise Clamp 1 3/4" height (Cross Hair)	\$ 105.00
R20-MV-B	Mini Vise Clamp 2" height (V-clamp)	\$ 110.00
R20-LB-BASE	Locating Block Base	\$ 25.90



Spring Pusher Standoff		
Rayco Part #	Description	Price
R20-751-SPS	.75" Dia. X 1" H. Spring Pusher Standoff Clamp	\$ 47.00



Mini Vertical Plate		
Rayco Part #	Description	Price
R20-32550-50-VP	3" Width X 2" Plate Height X .50" Thick .50" on Center	\$ 133.00



## Vision Accessories

Corner Viewer		
Rayco Part #	Description	Price
R20-CV-612-A	6" X 12" Black Anodized CV (2" Small Brackets)	\$ 309.00
R20-CV-612-B	6" X 12" Black Anodized CV (4" Large Brackets)	\$ 319.00
R20-CV-1212-A	12" X 12" Black Anodized CV (2" Small Brackets)	\$ 389.00
R20-CV-1212-B	12" X 12" Black Anodized CV (4" Large Brackets)	\$ 409.00
R20-CV-1218-A	12" X 18" Black Anodized CV (2" Small Brackets)	\$ 459.00
R20-CV-1218-B	12" X 18" Black Anodized CV (4" Large Brackets)	\$ 469.00
R20-CV-1818-A	18" X 18" Black Anodized CV (2" Small Brackets)	\$ 489.00
R20-CV-1818-B	18" X 18" Black Anodized CV (4" Large Brackets)	\$ 499.00



Brackets for Corner Viewer		
Rayco Part #	Description	Price
R20-CV-A	2" Small Bracket (Set of 2)	\$ 18.00
R20-CV-B	4" Large Bracket (Set of 2)	\$ 23.00

**RVFL (Rayco Vision Fixture Locator) Starting at \$425**  
 Custom made Clearcoat Anodize Aluminum with Magnetic Locators Call for details & pricing

