

[www.Raycofixture.com](http://www.Raycofixture.com)



## M8 Component Pricing

### Table of Contents:

Page 1- Clamps

Page 2- Adjustables

Page 3- Spring Pins / Cones / Vacuum Cups

Page 4- Vacuum Accessories / Stand-Offs

Page 5- Pin Stand-Offs / Towers

Page 6- Brackets / Chuck / Vise

Page 7- Vision Accessories

**Call for Details about our Custom Fixturing!**

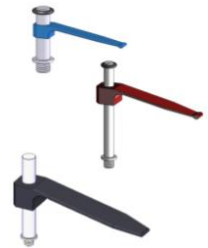


All Components are  
Identified for  
Repeatable Set-ups



January 2011

Tension Spring		
Rayco Part #	Description	Price
R8-ST5-25	Small Tension Spring-Short Post	\$ 24.70
R8-ST5-75	Small Tension Spring	\$ 26.70
R8-LTS-75	Large Tension Spring	\$ 27.90
R8-XLTS	X-large tension spring	\$ 44.90
R8-XLTSP	X-large tension spring w/ plunger	\$ 56.90



Toggle Clamp		
Rayco Part #	Description	Price
R8-SDC	Small DeStaCo Clamp	\$ 73.40
R8-LDC	Large DeStaCo Clamp	\$ 69.20



Tension Spring Bracket		
Rayco Part #	Description	Price
R8-19-TSB	19mm Dia. Tension Spring Bracket	\$ 44.68
R8-25-TSB	25mm Dia. Tension Spring Bracket	\$ 45.89



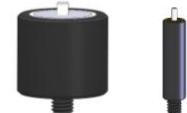
Spring Holding Device		
Rayco Part #	Description	Price
R8-SHD	Spring Holding Device	\$ 79.20



Magnet		
Rayco Part #	Description	Price
R8-13-M	13mm Dia. Magnet	\$ 29.70
R8-19-M	19mm Dia. Magnet	\$ 31.90
R8-25-M	25mm Dia. Magnet	\$ 42.40
R8-32-M	32mm Dia. Magnet	\$ 52.20



Pin Magnet		
Rayco Part #	Description	Price
R8-13-PM	13mm Dia. Pin Magnet	\$ 62.90
R8-19-PM	19mm Dia. Pin Magnet	\$ 74.70
R8-25-PM	25mm Dia. Pin Magnet	\$ 78.70



Spring Pusher Standoff		
Rayco Part #	Description	Price
R8-1526-SPS	15mm Dia. X 26mm H. Spring Pusher Standoff Clamp	\$ 45.00



V Magnet		
Rayco Part #	Description	Price
R8-13-VM	13mm Dia. V-Magnet	\$ 70.70
R8-19-VM	19mm Dia. V-Magnet	\$ 84.90
R8-25-VM	25mm Dia. V-Magnet	\$ 89.70
R8-32-VM	32mm Dia. V-Magnet	\$ 106.90



V Magnet with Base		
Rayco Part #	Description	Price
R8-13-VMB	13mm Dia. V-Magnet on Base	\$ 106.40
R8-19-VMB	19mm Dia. V-Magnet on Base	\$ 109.90
R8-25-VMB	25mm Dia. V-Magnet on Base	\$ 114.40
R8-32-VMB	32mm Dia. V-Magnet on Base	\$ 131.40



Pivot Joint		
Rayco Part #	Description	Price
R8-PJ	Pivot Joint (M8 Thread)	\$ 74.90



Adjustable Pivot Joint		
Rayco Part #	Description	Price
R8-APJ	Adjustable pivot Joint (M8 Thread)	\$ 72.00



Adjustable Jack Stand		
Rayco Part #	Description	Price
R8-19-JS	19mm Dia. Small Jackstand	\$ 45.40
R8-25-JS	25mm Dia. Large Jackstand	\$ 53.90



Adjustable Height Stand		
Rayco Part #	Description	Price
R8-AHS	Adjustable Height Stand	\$ 53.20



Adjustable Height V-Stand		
Rayco Part #	Description	Price
R8-12-AHVS	12mm Small Adjustable Height V	\$ 36.90
R8-25-AHVS	25mm Large Adjustable Height V	\$ 36.90



Slide Base		
Rayco Part #	Description	Price
R8-SLD	M8 Slide Base	\$ 40.40



Others		
Rayco Part #	Description	Price
R8-LB	locating block w/ base	\$ 88.90
R8-LB-BASE	Locating Block Base	\$ 32.00



Standoff Adapter		
Rayco Part #	Description	Price
R8-14-SOA	1" Dia. X 1" Standoff Adapter w/ 1/4-20 Threads	\$ 15.40



Tooling Ball		
Rayco Part #	Description	Price
R8-12-TB	25mm Dia. X 25mm Standoff w/ 12mm Tooling Ball	\$ 63.79



Adjustable T-Arm		
Rayco Part #	Description	Price
R8-AA	Adjustable T-Arm	\$ 61.90



Cones		
Rayco Part #	Description	Price
R8-NC	Nylon Cone	\$ 8.70
R8-SC	Steel Cone	\$ 11.40
R8-AC	Aluminum Cone	\$ 24.20
R8-AC	Aluminum Cone	\$ 24.20



Spring - Loaded, Rounded Pin Standoff		
Rayco Part #	Description	Price
R8-1350-SLRP	13mm Dia. X 50mm Spring Loaded Rounded Pin Standoff	\$ 70.88
R8-1950-SLRP	19mm Dia. X 50mm Spring Loaded Rounded Pin Standoff	\$ 77.99



Spring - Loaded, Tapered Pin Standoff		
Rayco Part #	Description	Price
R8-1350-SLTP	13mm Dia. X 50mm Spring Loaded Pin Standoff w/ 6mm	\$ 70.99
R8-1950-SLTP	19mm Dia. X 50mm Spring Loaded Pin Standoff w/ 10mm	\$ 77.99



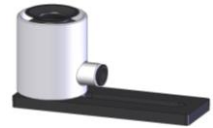
Suction Cup		
Rayco Part #	Description	Price
R8-10-SC	10mm Suction Cup	\$ 55.78
R8-15-SC	15mm Suction Cup	\$ 57.27
R8-20-SC	20mm Suction Cup	\$ 62.02
R8-25-SC	25mm Suction Cup	\$ 82.50
R8-30-SC	30mm Suction Cup	\$ 63.84
R8-40-SC	40mm Suction Cup	\$ 74.56
R8-50-SC	50mm Suction Cup	\$ 81.18



Exposed Suction Cup		
Rayco Part #	Description	Price
R8-10-EXSC	10mm Exposed Suction Cup	\$ 41.24
R8-20-EXSC	20mm Exposed Suction Cup	\$ 47.37
R8-30-EXSC	30mm Exposed Suction Cup	\$ 56.75
R8-50-EXSC	50mm Exposed Suction Cup	\$ 72.16



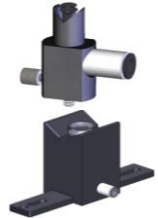
Slide Suction Cup		
Rayco Part #	Description	Price
R8-10-SSC	10mm Slide Suction Cup	\$ 71.08
R8-15-SSC	15mm Slide Suction Cup	\$ 74.03
R8-20-SSC	20mm Slide Suction Cup	\$ 77.66



V Suction Cup		
Rayco Part #	Description	Price
R8-10-VSC	10mm V-Suction Cup	\$ 86.11
R8-20-VSC	20mm V-Suction Cup	\$ 98.27
R8-40-VSC	40mm V-Suction Cup	\$ 121.53



Square V Suction Cup		
Rayco Part #	Description	Price
R8-20-SVSC	20mm Square V-Suction Cup	\$ 129.51
R8-40-SVSC	40mm Square V-Suction Cup	\$ 150.06
R8-50-SVSC	50mm Square V-Suction Cup	\$ 209.99



Vacuum accessories		
Rayco Part #	Description	Price
R20-X10L VP	X10L VACUUM PUMP, 1/8" Male quick disconnect	\$ 190.72
R-9P-M (9 prt manifold)	9 Port Manifold, 1 Inlet	\$ 160.00
R-13P-M (13 port manifold)	13 Port Manifold, 1 inlet	\$ 207.93
R-12-VH	Vacuum hose, 12" Length	\$ 2.00
R-18-VH	Vacuum hose, 18" Length	\$ 3.00
R-24-VH	Vacuum hose, 24" Length	\$ 4.00
R-36-VH	Vacuum hose, 36" Length	\$ 6.00
R-60-VH	Vacuum hose, 60" Length	\$ 10.00
R-120-VH	Vacuum hose, 120" Length	\$ 20.00
R-PMC1002	Open coupler	\$ 8.91
R-PMCD1002	Closed coupler	\$ 12.22
R-PMCD2202	Straight hose barb	\$ 10.00
R-PMC2302	Elbow hose barb	\$ 7.73



Standoff		
Rayco Part #	Description	Price
R8-1315-SO	13mm Dia. X 15mm H. Standoff	\$ 11.40
R8-1320-SO	13mm Dia. X 20mm H. Standoff	\$ 10.70
R8-1325-SO	13mm Dia. X 25mm H. Standoff	\$ 10.90
R8-1350-SO	13mm Dia. X 50mm H. Standoff	\$ 11.20
R8-1375-SO	13mm Dia. X 75mm H. Standoff	\$ 14.90
R8-13100-SO	13mm Dia. X 100mm H. Standoff	\$ 15.40
R8-13150-SO	13mm Dia. X 150mm H. Standoff	\$ 19.00
R8-1915-SO	19mm Dia. X 15mm H. Standoff	\$ 11.70
R8-1920-SO	19mm Dia. X 20mm H. Standoff	\$ 11.70
R8-1925-SO	19mm Dia. X 25mm H. Standoff	\$ 11.90
R8-1950-SO	19mm Dia. X 50mm H. Standoff	\$ 12.40
R8-1975-SO	19mm Dia. X 75mm H. Standoff	\$ 13.90
R8-19100-SO	19mm Dia. X 100mm H. Standoff	\$ 14.20
R8-19150-SO	19mm Dia. X 150mm H. Standoff	\$ 20.90
R8-2515-SO	25mm Dia. X 15mm H. Standoff	\$ 11.75
R8-2520-SO	25mm Dia. X 20mm H. Standoff	\$ 11.90



R8-2525-SO	25mm Dia. X 25mm H. Standoff	\$ 11.20
R8-2550-SO	25mm Dia. X 50mm H. Standoff	\$ 13.40
R8-2575-SO	25mm Dia. X 75mm H. Standoff	\$ 15.90
R8-25100-SO	25mm Dia. X 100mm H. Standoff	\$ 16.40
R8-25150-SO	25mm Dia. X 150mm H. Standoff	\$ 23.40
R8-3825-SO	38mm Dia. X 25mm H. Standoff	\$ 19.40
R8-3850-SO	38mm Dia. X 50mm H. Standoff	\$ 24.40
R8-38150-SO	38mm Dia. X 150mm H. Standoff	\$ 47.90



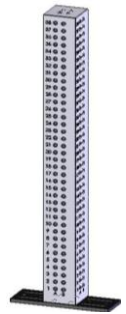
Pin Standoff		
Rayco Part #	Description	Price
R8-1320-PSO	13mm Dia. X 20mm H. X 3.2mm Pin Standoff	\$ 16.20
R8-1325-PSO	13mm Dia. X 25mm H. X 3.2mm Pin Standoff	\$ 16.20
R8-1920-PSO	19mm Dia. X 20mm H. X 3.2mm Pin Standoff	\$ 22.10



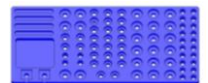
Rounded Pin Standoff		
Rayco Part #	Description	Price
R8-1320-RPSO	13mm Dia. X 20mm X 6.3mm Rounded Pin Standoff	\$ 39.27
R8-1325-RPSO	13mm Dia. X 25mm H. X 6.3mm Rounded Pin Standoff	\$ 40.87



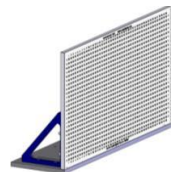
Mini Towers		
Rayco Part #	Description	Price
R8-25100-MT4	25mm Sq. X 100mm Mini Tower (1 Row, 4 Sides)	\$ 145.90
R8-25150-MT4	25mm Sq. X 150mm Mini Tower (1 Row, 4 Sides)	\$ 146.90
R8-25200-MT4	25mm Sq. X 200mm Mini Tower (1 Row, 4 Sides)	\$ 178.00
R8-25300-MT4	25mm Sq. X 300mm Mini Tower (1 Row, 4 Sides)	\$ 185.90
R8-38300-MT4	38mm Sq. X 300mm Mini Tower (2 Rows, 4 Sides)	\$ 288.70
R8-38400-MT4	38mm Sq. X 400mm Mini Tower (2 Rows, 4 Sides)	\$ 375.50
R8-50500-MT4	50mm Sq. X 500mm Mini Tower (2 Rows, 4 Sides)	\$ 505.90
R8-50600-MT4	50mm Sq. X 600mm Mini Tower (2 Rows, 4 Sides)	\$ 509.90
R8-50750-MT4	50mm Sq. X 750mm Mini Tower (2 Rows, 4 Sides)	\$ 594.20



Component Trays		
Rayco Part #	Description	Price
R8-SCT	M8 Small Component Tray	\$ 154.90



Vertical Plate		
Rayco Part #	Description	Price
R8-300125-VP	300mm X 125mm X 13mm Vertical Plate w/ 8mm ...	\$ 431.36
R8-350180-VP	350mm X 180mm X 13mm Vertical Plate w/ 8mm ...	\$ 716.18
R8-500250-VP	500mm X 250mm X 13mm Vertical Plate w/ 8mm ...	\$ 1,461.91



Rotating Standoff		
Rayco Part #	Description	Price
R8-AS	M8 adapter screw	\$ 7.90
R8-2525-RS	8mm Rotating Standoff	\$ 64.00



Adjustable Angle Plate		
Rayco Part #	Description	Price
R8-AAP	8mm Adjustable Angle Plate	\$ 174.00



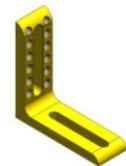
Spring Loaded Pusher Clamp		
Rayco Part #	Description	Price
R8-SLPC	8mm Spring loaded push clamp	\$ 56.00



3 Jaw Hand Chuck		
Rayco Part #	Description	Price
R8-CJ3	8mm 3 Jaw chuck	\$ 365.00



90° Angle Brackets		
Rayco Part #	Description	Price
R8-90L2	90° Angle bracket including: 3-rows 8mm tapped holes	\$ 37.50



Steel Vise		
Rayco Part #	Description	Price
R8-MV-2125	Steel Mini Vise 2-1/8 jaw, 2-3/8Wx6-3/4L 1/4-20 bolts	\$ 168.00



Mini Vertical Plate		
Rayco Part #	Description	Price
R8-755040-10-VP	75mm W. X 50mm Plate H. X 13mm Thick 10mm on Cer	\$ 133.00



## Vision Accessories

### Corner Viewer

Rayco Part #	Description	Price
R8-150300-A	150mm X 300mm Black Anodized CV (Small Brackets)	\$ 309.00
R8-150300-B	150mm X 300mm Black Anodized CV (Large Brackets)	\$ 319.00
R8-300300-A	300mm X 300mm Black Anodized CV (Small Brackets)	\$ 389.00
R8-300300-B	300mm X 300mm Black Anodized CV (Large Brackets)	\$ 409.00
R8-300450-A	300mm X 450mm Black Anodized CV (Small Brackets)	\$ 459.00
R8-300450-B	300mm X 450mm Black Anodized CV (Large Brackets)	\$ 469.00
R8-450450-A	450mm X 450mm Black Anodized CV (Small Brackets)	\$ 489.00
R8-450450-B	450mm X 450mm Black Anodized CV (Large Brackets)	\$ 499.00



### Brackets for Corner Viewer

Rayco Part #	Description	Price
R8-CV-A	50mm Small Bracket (Set of 2)	\$ 18.00
R8-CV-B	100mm Large Bracket (Set of 2)	\$ 23.00

**RVFL (Rayco Vision Fixture Locator) Starting at \$425**  
 Custom made Clearcoat Anodize Aluminum with Magnetic Locators Call for details & pricing

