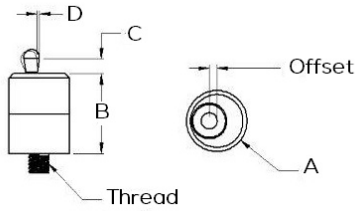


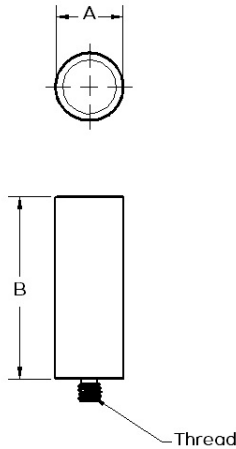
## Rotational Spring Locating Pin Standoff



Part Number	Thread	A	B	C	D
R20-75-CSPS	1/4-20	0.75"	1"	0.168"	0.027"
R8-19-CSPS	M8	19 mm	25 mm	4.3 mm	0.7 mm
R6-19-CSPS	M6	19 mm	25 mm	4.3 mm	0.7 mm
R4-19-CSPS	M4	19 mm	25 mm	4.3 mm	0.7 mm

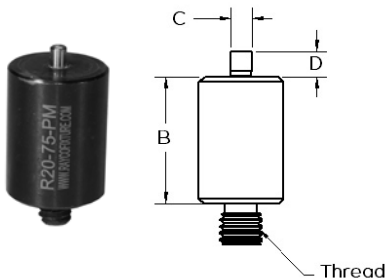
\*Optional pin material and side forces available

## Magnetic Standoffs



Part Number	Thread	A	B
R20-50-M	1/4-20	0.50"	1"
R20-75-M	1/4-20	0.75"	1"
R20-1-M	1/4-20	1"	1"
R20-125-M	1/4-20	1.25"	1"
R8-13-M	M8	13 mm	25 mm
R8-19-M	M8	19 mm	25 mm
R8-25-M	M8	25 mm	25 mm
R8-32-M	M8	32 mm	25 mm
R6-13-M	M6	13 mm	25 mm
R6-19-M	M6	19 mm	25 mm
R6-25-M	M6	25 mm	25 mm
R4-6-M	M4	6 mm	25 mm
R4-13-M	M4	13 mm	25 mm

## Magnetic Pin Standoffs



Part Number	Thread	A	B	C	D
R20-50-PM	1/4-20	0.50"	1"	0.125"	0.150"
R20-75-PM	1/4-20	0.75"	1"	0.125"	0.150"
R20-1-PM	1/4-20	1"	1"	0.125"	0.150"
R8-13-PM	M8	13 mm	25 mm	3 mm	3.8 mm
R8-19-PM	M8	19 mm	25 mm	3 mm	3.8 mm
R8-25-PM	M8	25 mm	25 mm	3 mm	3.8 mm
R6-13-PM	M6	13 mm	25 mm	3 mm	3.8 mm
R6-19-PM	M6	19 mm	25 mm	3 mm	3.8 mm
R6-25-PM	M6	25 mm	25 mm	3 mm	3.8 mm
R4-6-PM	M4	6 mm	25 mm	2 mm	3.8 mm
R4-13-PM	M4	13 mm	25 mm	2 mm	3.8 mm