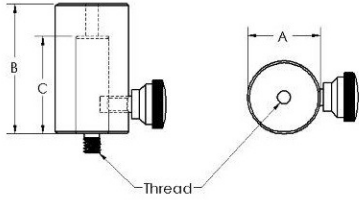
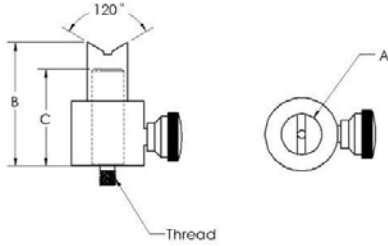


## Adjustable Height Stands



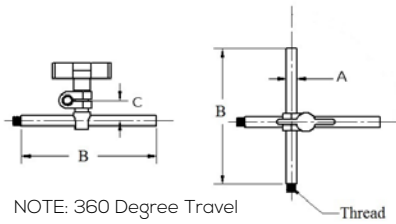
Part Number	Thread	A	B	C
R20-AHS	1/4-20	1.125"	2"	1.5"
R8-AHS	M8	28.5 mm	50 mm	38 mm
R6-AHS	M6	28.5 mm	50 mm	38mm

## Adjustable V-Height Stands



Part Number	Thread	A	B	C
R20-50-AHVS	1/4-20	0.625"	1.9"	1.5"
R20-1-AHVS	1/4-20	1.125"	2"	1.5"
R8-12-AHVS	M8	16 mm	48.5 mm	38 mm
R8-25-AHVS	M8	25 mm	50 mm	38 mm
R6-12-AHVS	M6	16 mm	48.5 mm	38 mm
R6-25-AHVS	M6	25 mm	50 mm	38 mm

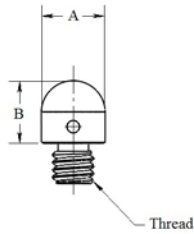
## Adjustable T-Arms



NOTE: 360 Degree Travel

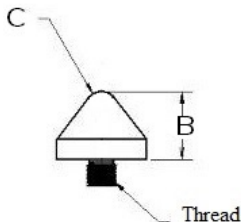
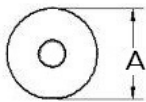
Part Number	Thread	A	B	C
R20-AA	1/4-20	0.3125"	4"	0.6"
R8-AA	M8	8 mm	100 mm	15 mm
R6-AA	M6	8 mm	100 mm	15 mm

## Resting Pins



Part Number	Thread	A	B	Material
R20-SRP	1/4-20	0.375"	0.375"	Steel
R8-SRP	M8	13 mm	12 mm	Steel
R6-SRP	M6	9.5 mm	9.5 mm	Steel
R4-ARP	M4	6.3 mm	5 mm	Aluminum

## Cones



Part Number	Thread	A	B	C	Material
R20-NC	1/4-20	0.625"	0.50"	0.156"	Nylon
R20-SC	1/4-20	0.625"	0.50"	0.156"	Steel
R20-AC	1/4-20	1"	0.75"	0.1875"	Aluminum
R8-NC	M8	16 mm	13 mm	4 mm	Nylon
R8-NC-L	M8	25 mm	19 mm	4.8 mm	Nylon
R8-SC	M8	16 mm	13 mm	4 mm	Steel
R8-AC	M8	25 mm	19 mm	4.8 mm	Aluminum
R6-NC	M6	16 mm	13 mm	4 mm	Nylon
R6-NC-L	M6	25 mm	19 mm	4.8 mm	Nylon
R6-SC	M6	16 mm	13 mm	4 mm	Steel
R6-AC	M6	25 mm	19 mm	4.8 mm	Aluminum