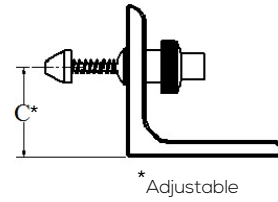
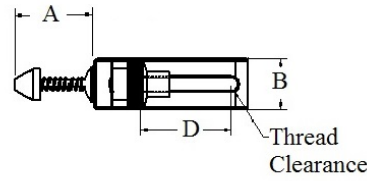
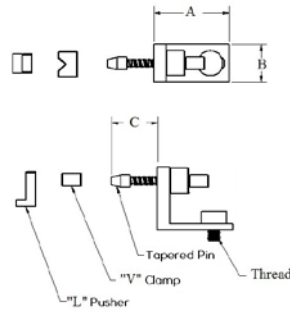


Spring Holding Devices

Part Number	Thread	A	B	C	D
R20-SHD	1/4-20	0.5"	1"	1.75"	1.74"
R8-SHD	M8	13 mm	25 mm	44 mm	44 mm
R6-SHD	M6	13 mm	25 mm	44 mm	44 mm

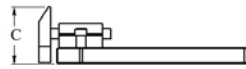
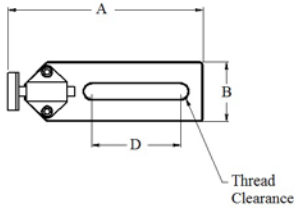


Pusher Clamp



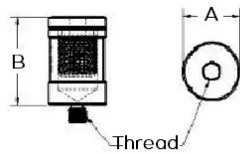
Part Number	Thread	A	B	C
R20-PC	1/4-20	1.5"	0.75"	0.15"
R6-PC	M6	38 mm	19 mm	3.8 mm
R4-PC	M4	38 mm	19 mm	3.8 mm

Spring Loaded Pusher Clamp



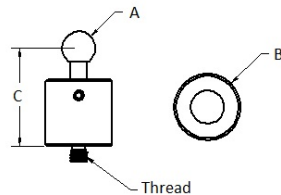
Part Number	Thread	A	B	C	D
R20-SLPC	1/4-20	3.25"	1"	0.90"	1.75"
R8-SLPC	M8	83 mm	25 mm	22.8 mm	44 mm
R6-SLPC	M6	83 mm	25 mm	22.8 mm	44 mm

Adjustable Jackstands



Part Number	Thread	A	B	Height Adjustment
R20-50-JS	1/4-20	0.625"	15"	0.500"
R20-1-JS	1/4-20	1"	15"	0.500"
R8-19-JS	M8	19 mm	38 mm	13 mm
R8-25-JS	M8	25 mm	38 mm	13 mm
R6-13-JS	M6	13 mm	38 mm	13 mm
R6-25-JS	M6	25 mm	38 mm	13 mm
R4-MJS	M4	9.5 mm	20.2 mm	5 mm

Tooling Balls



Part Number	Thread	A	B	C
R20-50-TB	1/4-20	0.5"	1"	1.5"
R8-12-TB	M8	12.7 mm	25 mm	38.1 mm
R6-12-TB	M6	12.7 mm	25 mm	38.1 mm