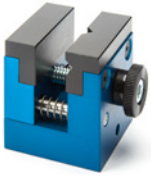
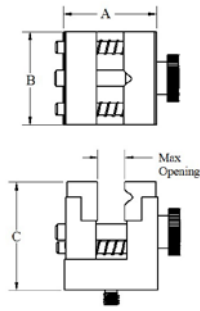


## Small Vice Clamp



\*Standard SVC is supplied with plastic jaws as show



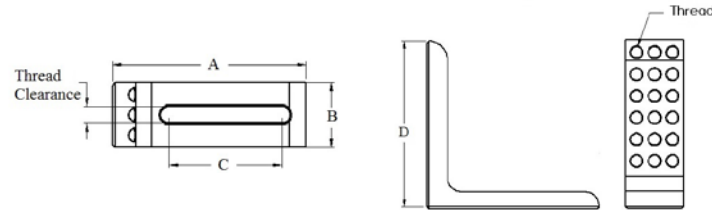
Part Number	Thread	A	B	C	Max Opening
R20-SVC	1/4-20	15"	15"	1.75"	0.45"
R8-SVC	M8	38 mm	38 mm	44.5 mm	11 mm
R6-SVC	M6	38 mm	38 mm	44.5 mm	11 mm
R4-SVC	M4	38 mm	38 mm	44.5 mm	11 mm

\*Jaw Material: Plastic, Aluminum and Steel

\*Jaw Design: Horizontal or Vertical V-notch

Stepped (to control seated depth of clamp part)

## 90 Degree Angle Brackets

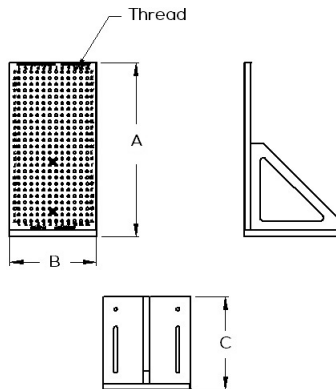


Part Number	Thread	A	B	C	D
R20-90L2 (2 rows)	1/4-20	3"	1"	1.75"	3"
R20-90L3 (3 rows)	1/4-20	3"	1"	1.75"	3"
R8-90L2 (2 rows)	M8	76 mm	25mm	44.45 mm	76.2 mm
R6-90L2 (2 rows)	M6	76 mm	25 mm	44.45 mm	76.2 mm
R6-90L3 (3 rows)	M6	76 mm	25 mm	44.45 mm	76.2 mm
R4-90L4 (4 rows)	M4	76 mm	25 mm	44.45 mm	76.2 mm

## Vertical Plates

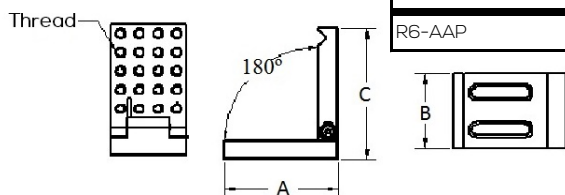


Numbers in the X-Axis & Letters in the Z-Axis.



Part Number	Thread	A	B	C
R20-3250-50-VP	1/4-20	3"	2"	2"
R20-125-VP	1/4-20	12"	5"	6"
R20-147-VP	1/4-20	14"	7"	7.5"
R20-2010-VP	1/4-20	20"	10"	8"
R8-300125-VP	M8	300 mm	125 mm	127 mm
R8-350180-VP	M8	350 mm	180 mm	180 mm
R8-500250-VP	M8	500 mm	250 mm	203 mm
R8-755013-10-VP	M8	75 mm	50 mm	50 mm
R6-300125-VP	M6	300 mm	125 mm	127 mm
R6-350180-VP	M6	350 mm	180 mm	180 mm
R6-500250-VP	M6	500 mm	250 mm	203 mm
R6-755013-10-VP	M6	75 mm	50 mm	50 mm
R4-507513-10-VP	M4	50 mm	75 mm	38 mm

## Adjustable Angle Plate



Part Number	Thread	A	B	C
R20-AAP	1/4-20	3"	2"	3.5"
R8-AAP	M8	75 mm	50 mm	88.9 mm
R6-AAP	M6	75 mm	50 mm	88.9 mm