

## Angle Brace



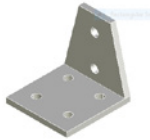
Part Number	Description
AX-12AB	12" Angle Brace
AX-15AB	15" Angle Brace
AX-18AB	18" Angle Brace

## Angle Gusset



Part Number	Description
AX-1AG4	1" Wide Angle Gusset with 4 holes
AX-2AG4	2" Wide Angle Gusset with 4Holes
AX-2AG8	2" Wide Angle Gusset with 8 Holes
AX-3AG4	3" Wide Angle Gusset with 4 Holes
AX-3AG8	3" Wide Angle Gusset with 8 Holes

## Angle Transition



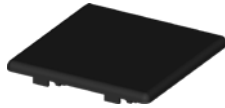
Part Number	Description
AX-21A6	2" Angle Transition with 6 Holes
AX-23A8	2" Angle Transition with 8 Holes

## Grid Plate



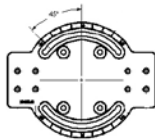
Part Number	Description
AX20-33	3" x 3" x 1/2" Aluminum Plate with 1/4-20 Threaded Holes
AX20-36	3" x 6" x 1/2" Aluminum Plate with 1/4-20 Threaded Holes
AX8-9090	90mm x 900mm x 13mm Aluminum Plate with M8 Threaded Holes
AX8-90165	90mm x 165mm x 13mm Aluminum Plate with M8 Threaded Holes

## End Caps



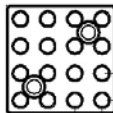
Part Number	Description
AX-1-C	1" x 1" End Cap
AX-12-C	1" x 2" End Cap
AX-2-C	2" x 2" End Cap
AX-3-C	3" x 3" End Cap

## Rotating Base



Part Number	Description
AX20-RB	5" x 5" Rotational Base

## Top Plate



Part Number	Description
AX20-TP	2" x 2" x 1/2" Top Plate

## Case



Part Number	Description
AX-BOX	Organizer Box

## Screws

Part Number	Description
AX20-BH-50	1/4-20 Button Head Cap Screw
AX20-BH-63	1/4-20 Button Head Cap Screw
AX8-BH	M8 Button Head Cap Screw
AX20-SH-50	1/4-20 Socket Head Cap Screw
AX20-SH-63	1/4-20 Socket Head Cap Screw
AX8-SH	M8 Socket Head Cap Screw